

MedPark

S1

**NEW BONE  
NEW LIFE**

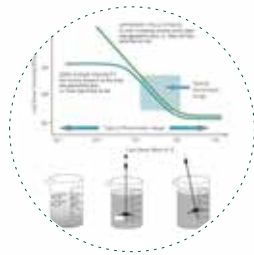
**MEDICAL  
BONE GRAFT**

Optimized for function transfers Hydrogel Carrier Technology

# The Ideal Bonegraft Material

Technology

Simple ceramic form of organic or inorganic compounds



Shaped · Customized on the site  
**Moldable + Adhesive Technology**

+



Induce osteoinduction  
**Biological Response Technology**

=

# S1

**NEW BONE  
NEW LIFE**

**ORIGINAL BONE**

Unable to mold  
Lack of retentivity

Inadjustable to intensity

Scattered & flowing

# S1

**Moldable & Customizing**

**Adjustable to intensity**

**Adhesive**

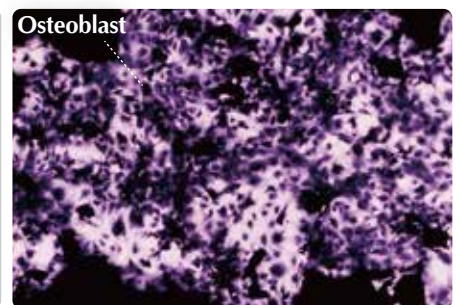
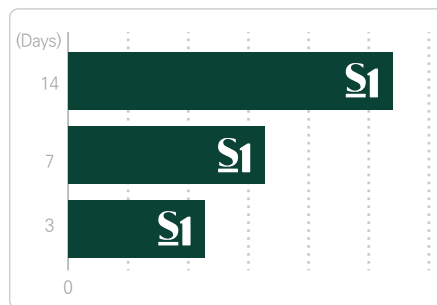
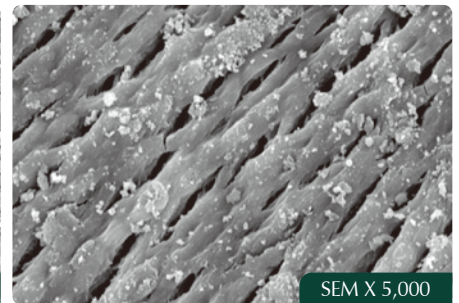
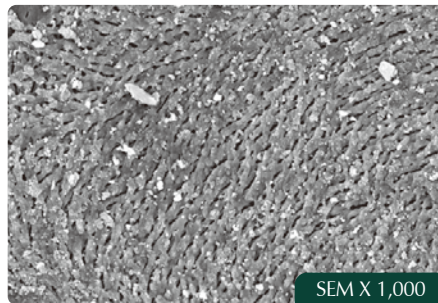
# Bonegraft solutions for Clinicians and Patients

## keywords

### High porosity

#### Porosimeter Test

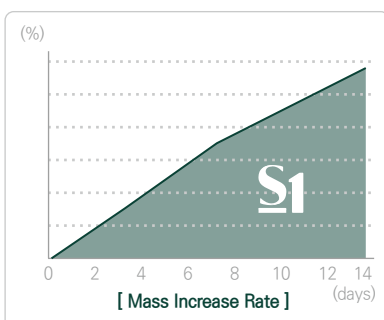
Percentage of porosity is more than 70%  
High porosity allows rapid penetration of growth factors



### Bone formation rate

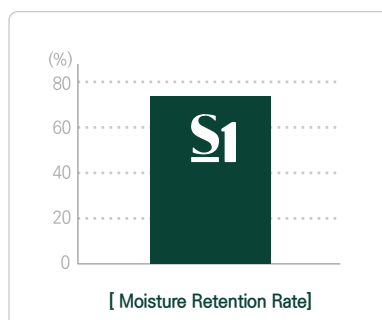
High attachment rate of ions to S1

21% increase in mass after 14 days  
due to high adhesive rate of ions



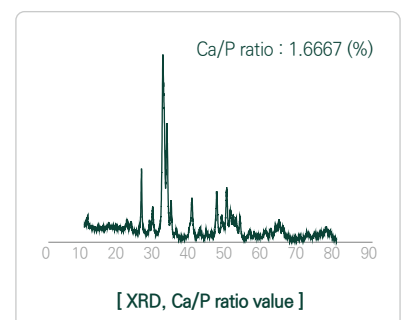
### Improved Hydrophilicity

- More than 72% in moisture retention rate



### Biocompatibility

- 1.67% of Ca/P ratio similar to human bones  
by XRD test





# Innovative technology

## Check it out for yourself !

### Quick Guide



TYPE	WEIGHT (g)	SOLUTION AMOUNT (cc)
Unused Syringe	10	5
	20	9
Used Syringe	10	10
	20	20



Applicable to needles larger than 10 Gauge



Can be applied by type by adjusting the amount of hydration according to the use



Please apply the liquid as indicated



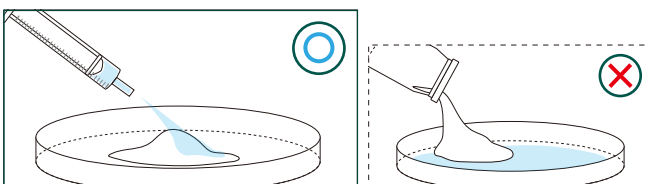
Each package is for one-time use only



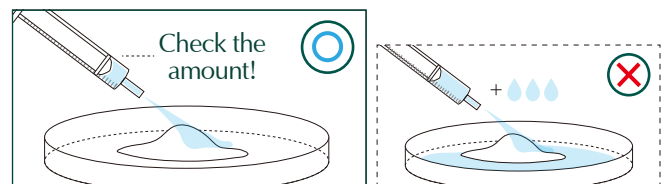
Do not mix with other bonegraft



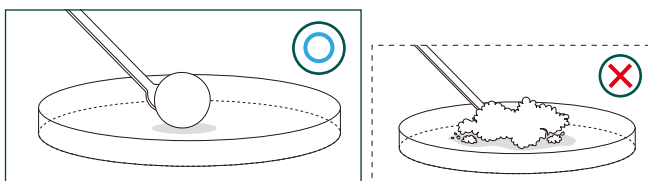
Mix with solutions well enough



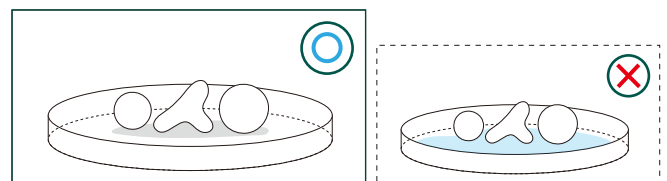
1 Place S1 in the tray and hydrate the materials with saline



1 Please use the recommended amount of saline only.



1 Knead the dough enough for at least 30 seconds by using hands or tools to form a lumpy shape before using S1.



1 Do not soak in saline after shaping for a surgery

# Global Regenerative Medical Company

# MedPark



1st Factory / HQ  
[ Bone Graft Material Line ]



2nd Factory / R&D Center  
[ Bone Graft + Collagen Line ]



3rd Factory  
[ Artificial Skin + Other Medical Field ]



Bone Graft Material, Artificial Skin  
( Allo · Xenograft Dermis )  
Own Original Technology

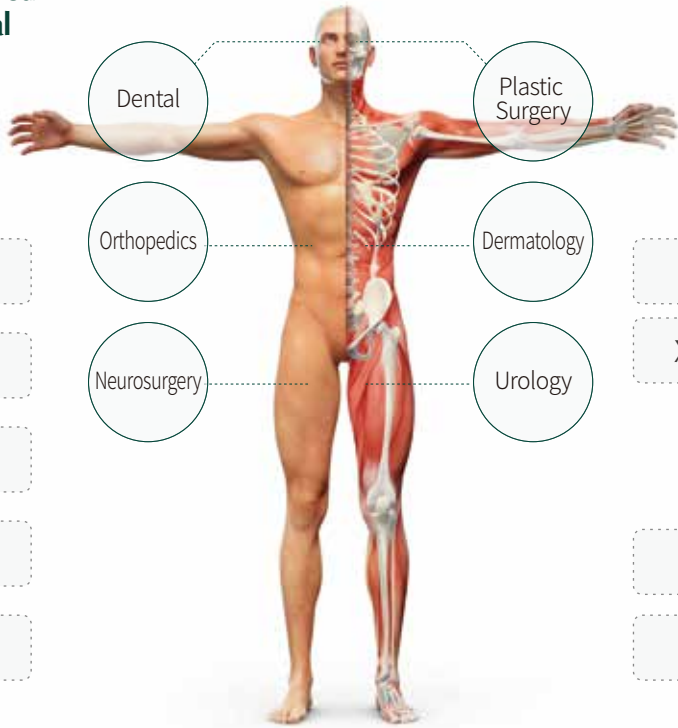


All Material Types  
Technology that doesn't depend on the material

### Concept of customized Bone graft material



- Sticky
- Moldable
- Microporosity
- Hydrophilicity
- Biocompatibility



### Artificial Skin

- Allograft Dermis
- Xenograft Dermis

### Collagen

- Raw Material
- Medical Device

**Global Regenerative Medical Total Solution Company**  
 with Innovative Bone Medicine Technology



**MedPark**

Biomaterials Manufacturer **MedPark Co.,Ltd.**

**TEL** +82 51 301 8777 **E-mail** biz@medpark.kr

**www.medpark.net**